

CYBERCLEAN®

**6000 SERIES
Model 7883CD
Aqueous Batch Cleaner**



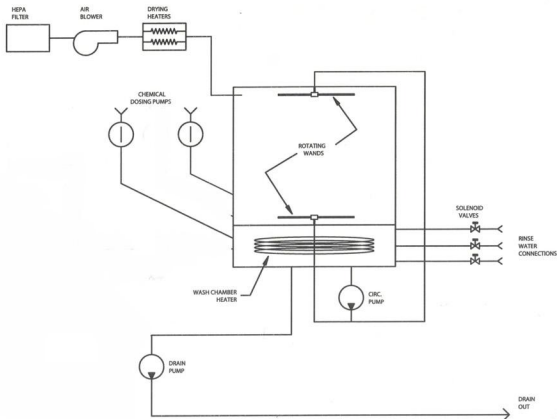
STANDARD FEATURES

- 8 Standard and One Custom Program*
- High Grade Stainless Steel Cleaning Chamber*
- HEPA Filtered Forced Hot Air Drying System*
- Chemistry/Neutralizer Injection System*
- High Volume, Low Pressure Spray*

www.emcgti.com

GLOBAL TECHNOLOGIES
EMC
CORPORATION

FLOW DIAGRAM



Miele Professional product enhanced by EMC for use in the electronics industry

Facilities Specifications

Footprint - 36" w x 28" dp x 33" h

Power - 208/220VAC, 60HZ, 20A, 3 phase supply
(system supplied with 5' long power cord)

Water - Three separate water connections for wash, rinse and final rinse. 3/4" hose connection, 4gpm @ 25PSI minimum pressure

Drain - Two 5' long, 7/8" id flexible drain hoses.
Max drain height = 3'
Max drain length = 12'



EMC Global Technologies, Inc.

Corporate Headquarters
4059 Skyron Drive
Doylestown, PA 18902
USA

Ph: 215-340-0650
Fax: 215-340-1737

www.emcgti.com