



SERVICE EXCELLENCE AWARDS WINNER 2001

# CYBERCLEAN®

## InLine Series

Models

100

200

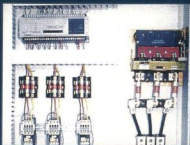
300

400

500



Standardized Type 2 Protection



Spray Angle Flexibility



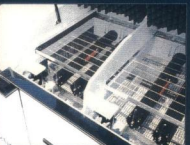
### STANDARD FEATURES

- 24" Belt Width
- PLC Controlled
- Stainless Steel Conveyor, Rails and Shaft
- 10 Horse Power Pumps with Overload Protection
- Stainless Steel, High Pressure Plumbing
- Over-temperature Safety Switch
- Redundant Low Liquid Level Safety Switches
- Automatic Fill and Maintain Valve
- Front and Rear Mounted Stainless Steel Pressure Gauges
- SS Valves to Adjust Pressure of Upper & Lower Spray Wands
- Under Belt Tank Screens, Tank Filters and Pump Screens
- Polypropylene Construction
- Adjustable Speed Conveyor with Safety Clutch
- Emergency Stop Safety Switches Mounted at Both Ends of System
- ESD Grounding Blocks Located at Both Ends of Machine

Stainless Steel Plumbing

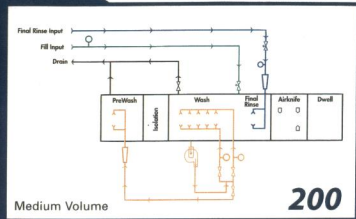
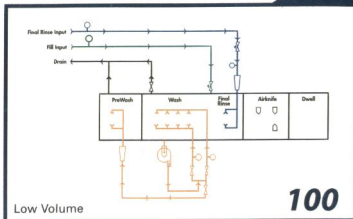


Effective Drying Technology

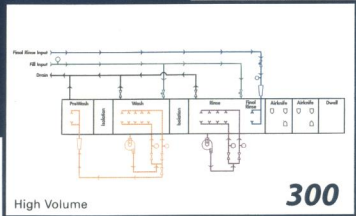


[www.emcgti.com](http://www.emcgti.com)

# FLOW DIAGRAMS



For Water Soluble Fluxes

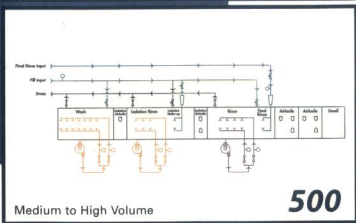
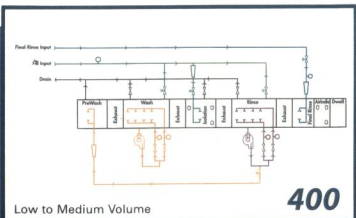


EMC Global Technologies, Inc.

Corporate Headquarters  
4059 Skyron Drive  
Doylestown, PA 18902  
USA

Ph: 215-340-0650  
Fax: 215-340-1737

For Fluxes Needing Chemistry For Their Removal



[www.emcgti.com](http://www.emcgti.com)